



NRS - Mechanical Bonding

NRS Technology is used for SBS DC Dual Carbon and DS Dual Sinter brake pad range. NRS Technology is based on a matrix of hooks raised on the backing plate that mold into the friction material, creating an indestructible mechanical bond between steel backing plate and friction material without use of adhesives. NRS Technology excludes completely the possibility of delamination of friction material and backing plate. SBS is the only manufacturer within the motorcycle brake pad industry, using the NRS Technology.



THE POWER TO STOP YOU®

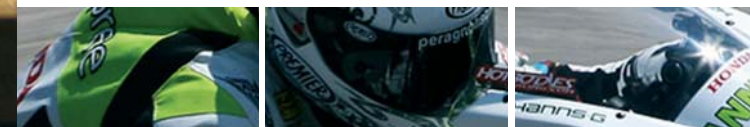


Partners in Racing

From our early racing years back in the 90's and up to date, SBS would like to thank our "Partners in Racing" and all riders for their effort and feed-back from testing our R&D products and for racing our best results from these tests to the TOP of road racing podiums all over the world. Thanks to:

Akira Yanagawa • Alessandro Polita • Alessio Corradi • Alex Barros • Alex De Angelis • Alex Gobert • Alex Gramigni • Alex Hoffmann • Andi Notman • Andrew Pitt • Anthony Gobert • Anthony West • Arne Tode • Aron Gobert • Aron Slight • Britt Turkington • Broc Parkes • Bruno Bonhuil • Carl Forgarty • Carlos Checa • Chris Peris • Chris Vermeulen • Chris Walker • Christer Lindholm • Christer Miniin • Christian Kellner • Christian Zaiser • Claudio Corti • Colin Edwards • Craig Coxhell • Damian Cudlin • David Checa • David De Gea • David Jeffries • David Morillon • Dean Ellison • Didier Van Keymeulen • Doug Chandler • Doug Polen • Fabien Foret • Farbizio Pirovano • Fonsi Nieto • Fred Merkel • Gary Mason • Gary McCoy • Geoff May • Giancarlo Falappa • Gianluca Nanelli • Gianluca Viziello • Gino Borsoi • Giovanni Bussei • Glen Richards • Graeme Gowland • Gregorio Lavilla • Hitoyasu Izutsu • Horst Saiger • Iain MacPherson • Ian Lougher • Igor Jerman • Ilario Dionisi • Ivan Clementi • Jake Zemke • James Ellison • James Haydon • James Toseland • James Witham • Jamie Robinson • Jason Pridmore • Javier Fores • Jeremy McWilliams • Jimmy Lindström • Joan Lascorz • Johan Stigefelt • John Crawford • John Crockford • John Hopkins • John Laverty • John Reynolds • Josh Hayes • Juan Borja • Julien da Costa • Jürgen Van der Goorberg • Jörg Teuchert • Kai Børre Andersen • Karl Harris • Karl Muggeridge • Katsuki Fujiwara • Kenan Sofuoglu • Kevin Curtain • Kurtis Roberts • Leon Haslam • Luca Scassa • Marcel Kellenberger • Massimo Roccoli • Matteo Baiocco • Matthieu Lagrive • Mauro Sanchini • Max Neukircher • Michael Barnes • Michael Laverty • Michael Rutter • Michael Schulten • Michel Fabrizio • Michelle Malatesta • Miguel Duhamel • Miguel Praia • Mike Edwards • Mike Hale • Mike Smith • Neil Hodgson • Nial McKenzie • Patric Muff • Paul Young • Pere Riba • Peter Goddard • Peter Linden • Philipp Hafenefer • Pier Francesco Chili • Piergiorgio Bontempi • Raymond Roche • Ricardo Chiarello • Rob McElnea • Robbin Harms • Robert Ulm • Roberto Roffo • Roger Lee Hayden • Roman Stamm • Ruben Xaus • Scott Russell • Sean Emmet • Sebastien LeGrelle • Sebastian Scarnato • Sebastien Charpentier • Sébastien Gimbert • Shinichi Nakatomi • Shinya Nakano • Simon Crafar • Simone Sanna • Stefan Nebel • Stephane Chambon • Stephane Mertens • Steve Hislop • Steve Martin • Steve Plater • Steve Rapp • Stuart Easton • Tatu Lauslehto • Terry Rymer • Thomas Stevens • Tom Kipp • Tommy Hayden • Tommy Hill • Troy Bayliss • Troy Corser • Vincent Haskovec • Vittorio Iannuzzo • Walter Tortoroglio • Warwick Nowland • Werner Daemen • William De Angelis • Xavier Simeon • Yoann Tiberio • Yukio Kagayama

..... and many more.



THE POWER TO STOP YOU®



Partners in Racing



SUPERBIKE WORLD CHAMPIONSHIP

- Ten Kate Honda Racing
- Stiggy Racing
- Althea Racing

SUPERSPORT WORLD CHAMPIONSHIP

- Ten Kate Honda Racing
- Stiggy Racing
- Kawasaki Racing
- Althea Racing
- Yamaha SSP Racing

SUPERSTOCK EUROPEAN CHAMPIONSHIP 1000

- Junior Team Ten Kate Honda
- Yamaha Motor Italia Junior Team
- Alstare Suzuki
- Team MV Agusta Gimotorsports
- MfM Racing

SUPERSTOCK EUROPEAN CHAMPIONSHIP 600

- Junior Team Ten Kate Honda
- Yamaha Motor Italia Junior Team
- MfM Racing

ENDURANCE WORLD CHAMPIONSHIP

- Team Phase One Endurance
- Team Bolliger Kawasaki



THE POWER TO STOP YOU®



The Choice of Champions

2001

World Champion!

SBS congratulates Andrew Pitt (AUS) and Team Eckl Kawasaki Racing with the 2001 World Supersport 600 title.

SBS is proud to be a technical sponsor of Team Eckl Kawasaki Racing

SBS Dual Carbon designed for Road Racing

2003

WORLD CHAMPION!

SBS congratulates Chris Vermeulen & Ten Kate Honda Racing Team winning the 2003 World Supersport title.

SBS is proud to be a technical partner of Ten Kate Honda Racing Team.

SBS Dual Carbon designed for Road Racing

2004

CHOICE OF WORLD CHAMPIONS

2004

2003

2001

SBS Dual Carbon designed for Road Racing

2005

CHOICE OF WORLD CHAMPIONS

WORLD CHAMPION SUPERSPORT 2005

2005

2004

2003

2001

SBS Dual Carbon designed for Road Racing

THE POWER TO STOP YOU®



The Power to Stop You

Scandinavian Brake Systems A/S is the world's leading manufacturer of motorcycle brake pads for street, off road and racing.

For more than 30 years our aim has always been to offer the most complete range of motorcycle brake pads in a variety of friction materials developed to suit specific purposes like street, off-road and racing – always based on our philosophy: "The highest performance of Brake System Technology can only be achieved by selecting the best friction materials".

DESIGNING THE POWER

SBS brake performance is the result of our continuous Research & Development. An R&D staff of dedicated engineers specialized in friction technology, in-house testing at high-tech brake dynos and race testing made by world championship winning teams on the best performing bikes ridden by world-class riders, keeps SBS at the cutting edge of brake pad technology.

PRODUCING THE POWER

European production located in Svendborg, Denmark. Advanced production lines using robot technology, workflows based on LEAN manufacturing philosophy, and ISO 9001:2000 guarantee a high and consistent product quality level.

USING THE POWER

The SBS brand is well known in the motorcycle racing world, with the company having supported numerous world championship winning teams and an endless list of national title winners.

THE POWER TO STOP YOU®



The Choice of Champions

2005

CHOICE OF WORLD CHAMPIONS

2005

THE POWER TO STOP YOU®

2006

HIGH 5 FOR SBS!

ALL TOP 5 RIDERS 2006 WORLD SUPERSPORT USED SBS BRAKE PADS!

THE POWER TO STOP YOU®

2007

DUAL CHAMPIONS

THE CHOICE OF 2007 WORLD CHAMPIONS

THE POWER TO STOP YOU®

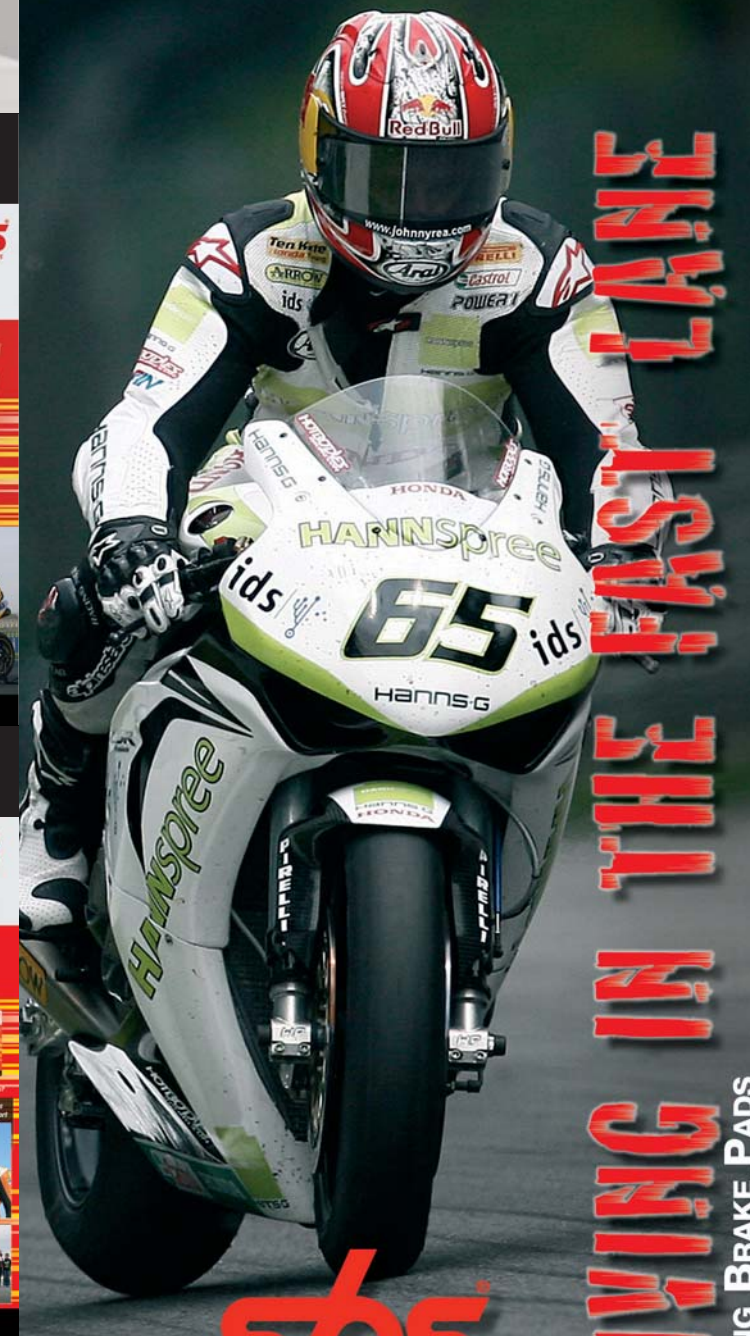
2008

WORLD CHAMPION

2008 ANDREW PITT SUPERSPORT 600

THE POWER TO STOP YOU®

THE POWER TO STOP YOU®



www.sbs.dk

LIVING IN THE FAST LANE RACING BRAKE PADS



RS - RACING SINTER

Used to be our Top racing pad for Supersport & Superbike back in the late 90's, now it is rated as the ultimate and affordable TrackDay pad for your road & track bike.



DC - DUAL CARBON

Used by the world's top teams and riders since 2001 introduction to win 7 World Championship titles and numerous of National Championships. DC is the "The choice of Champions" for Superstock, Supersport and Superbike classes.



Find DC bedding-in instruction and technical information at www.sbs.dk

DS - DUAL SINTER

Introduced 2007 for World Superbike, Supersport & Endurance, winning the 2 sprint Championships and doing the complete 24 Hour race distance of Lemans & Bol d'or in it's 1st season. DS proved already to be the new standard in brake pad technology for World Championship Racing & Endurance.



SBS REAR WHEEL

RQ - Carbon Tech

For riders using the rear brake to help steer into turns and handle the bike out of turns.



LS - Sintered Metal

For riders using the rear brake occasionally or only slightly going into turns.



SBS Road Racing

Detailed applications - see SBS Catalogue or www.sbs.dk

HONDA			DC	DS	RS	RQ	LS
RS	125 / 250	-	566	△	△	618	△
CBR	600 RR (Rad.cal)	05 - 06	809*	△	△	657	△
CBR	600 RR (Rad.cal)	07 -	809*	△	△	834	△
CBR	1000 RR Fireblade (Rad.cal)	04 - 05	809*	△	△	657	△
CBR	1000 RR Fireblade (Rad.cal)	06 -	809*	△	△	834	△
KAWASAKI							
ZX-6R	600 Ninja (Rad.cal)	07 -	838*	△	△	687	△
ZX-6RR	600 Ninja (Rad.cal)	03 - 06	788*	△	△	687	△
ZX-10R	1000 Ninja (Rad.cal)	04 - 07	788*	△	△	687	△
ZX-10R	1000 Ninja (Rad.cal)	08 -	806*	△	△	687	△
SUZUKI							
GSX-R	600 / 750 (Rad.cal)	04 - 05	806*	△	△	765	△
GSX-R	600 / 750 (Rad.cal)	06 -	806*	△	△	833	△
GSX-R	1000	01 - 02	686*	△	△	765	△
GSX-R	1000 (Rad.cal)	03	788*	△	△	765	△
GSX-R	1000 (Rad.cal)	04 - 06	806*	△	△	765	△
GSX-R	1000 (Rad.cal)	07 - 08	806*	△	△	833	△
GSX-R	1000 (Rad.cal)	09 -	806*	△	△	834	△
YAMAHA							
TZ	125 / 250	-	624	△	△	659	△
YZF	600 R6 (Rad.cal)	03 -	634*	△	△	657	△
YZF	1000 R1	98 - 01	634*	△	△	733	△
YZF	1000 R1	02 - 03	634*	△	△	728	△
YZF	1000 R1 (Rad.cal)	04 - 06	634*	△	△	657	△
YZF	1000 R1 (Rad.cal)(4-pad)	07 -	839*	△	△	657	△
APRILIA							
RS	125	06 -	844	△	△	747	△
RSV	1000 Mille, Nera, R, Factory, Pista	01 -	762*	△	△	730	△
RSV4	1000	09 -	841*	△	△	730	△
BMW							
S	1000 RR	09 -	762*	△	△	742	△
	1200 HP2 Sport	08 -	841*	△	△	671	△
DUCATI							
	749 , S, R	03 -	762*	△	△	730	△
	848 (Rad.cal)	08 -	706*	△	△	730	△
	916 SPS	97 - 98	706*	△	△	519	△
D16RR	990 Desmosedici RR	07 -	841*	△	△	730	△
	999 , S, R	03 -	762*	△	△	730	△
	1098 / 1198 , S, R	-	841*	△	△	730	△
KTM							
RC8	1190 , R	08 -	841*	△	△	730	△
TRIUMPH							
	675 Daytona Triple (Rad.cal)	09 -	864*	△	△	614	△
	675 Daytona (Rad.cal)	06 - 08	782*	△	△	614	△
RACING BRAKE CALIPERS							
AP RACING	2-pad Radial Monobloc		785	△	△	△	
BREMBO	Racing 2-pad GP Type		845	△	△	△	
BREMBO	Racing 2-pad Monobloc		711	△	△	△	
BREMBO	Racing 2-pad/2-piece		695	△	△	△	
BREMBO	Racing 4-pad Monobloc		805	△	△	△	
NISSIN	6-piston Monobloc (Z0901)		865	△	△	△	

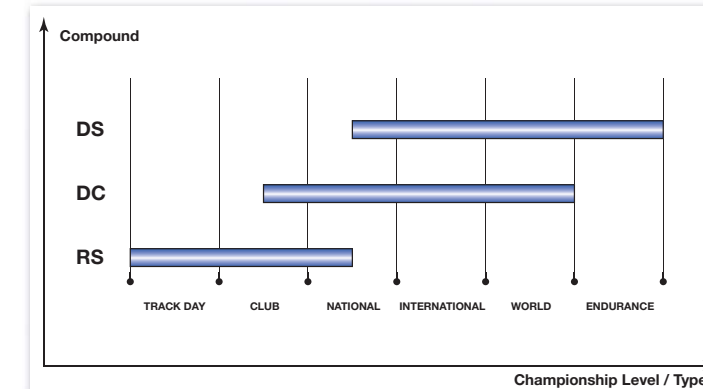
* = 2 sets required
△ = Available compounds



SBS Racing - Choice of Compound

SBS for any level / type of Road Racing.

SBS ROAD RACING / CHOICE OF COMPOUND



RS - RACING SINTER

DC - DUAL CARBON

DS - DUAL SINTER



www.sbs.dk

THE POWER TO STOP YOU®

Sinter

THE POWER TO STOP YOU®

Dual Carbon

THE POWER TO STOP YOU®

Dual Sinter

THE POWER TO STOP YOU®

Carbon Tech

Sinter

THE POWER TO STOP YOU®